

NATIONAL FOYER CONFERENCE 2017





WELCOME TO COUNTRY

Olivia Patten





A VISION FOR THE FOYER FOUNDATION

Keith Bryant

Chair, Foyer Foundation



SPONSORS



Foyers Around Australia



FOYER OXFORD, PERTH



- **Located on Oxford Street in the heart of vibrant Leederville, WA. Located on North Metropolitan TAFE Campus**
- **Number of places: 122 including children of young parents**
- **Average length of stay: 14 months. Stays up to 2 years with optional pathway for an additional 12 months**
- **Consortia: Anglicare WA, Foundation Housing, North Metropolitan TAFE**
- **Manager: John Thomson, Foyer Oxford Manager, Anglicare WA**



LADDER ST VINCENT STREET, PORT ADELAIDE

- Located in Port Adelaide, South Australia
- Number of places: 23
- Average length of stay: Young people sign a 12 month lease with the SA Public Housing Authority, young people's average length of stay is eighteen months.
- Consortia: Ladder, St Johns Youth Services, Housing SA
- Manager: Celeste Iannella, Service Manager, St John's Youth Services. Naomi Toole, State Manager South and Western Australia, Ladder.

TRINITY HILL, HOBART



- **Located in North Hobart within walking distance to CBD and opposite local TAFE**
- **Number of places: 46 students including 16 for NDIS**
- **Average length of stay: 12 months (service has only been in operation for 22 months)**
- **Consortia: Anglicare Tas, Community Housing Ltd, Mission Australia**
- **Manager: Raf Patterson, Senior Worker, Anglicare Tas**



SOUTHERN YOUTH FOYER, WOLLONGONG & WARILLA

- Located in Wollongong located close to CBD in Wollongong, 3 buildings on same block to allow transition. Warilla is at Shellharbour attached to youth and family centre. Both are close to education facilities, public transport and other community services
- Number of places: 25-32 in Wollongong, 20 Warilla and 17 dispersed
- Average length of stay: 12 months at Wollongong and 10 months at Warilla
- Consortia: Southern Youth and Family Services, plus support from local TAFEs, CentreLink, local football and basketball teams, Job Active providers
- Manager: Belinda Manevski, Wollongong and Nyree Hamilton Warilla, Coordinators, Southern Youth Foyer Project

VICTORIA FOYERS





FOYER WARRNAMBOOL

- Located on Main highway, walking distance to CBD and some of local schools
- Number of places: 16 including 3x 2b/r for young parents
- Average length of stay: Average is 14 months but can stay up to 2 years.
- Consortia: Brophy Family and Youth Services, Barwon Child Youth and Families, South West TAFE, BSL, Ladder
- Manager: Jenny Hand, Manager, Brophy Family and Youth Services

KARRUNG, BALLARAT



- **Located 5km from central Ballarat on a bus route**
- **Number of places: 18 including 4 doubles for mums and babies**
- **Average length of stay: Around 12 months**
- **Consortia: Uniting is the main provider including managing the housing related services. Other relationships are with local schools, local real estate agents, some local businesses**
- **Manager: Rob Hackett, Manager, Uniting**



SHEPPARTON

- Located in the CBD of Shepparton, opposite GOTAFE
- Number of places: 40
- Average length of stay: Too early but can stay up to 2 years
- Consortia: Berry St, Beyond Housing, GoTAFE
- Manager: Anita McCurdy, Manager, Berry Street

BROADMEADOWS, KANGAN



- **Co-located with Kangan Institute at Broadmeadows, NW Melbourne**
- **Number of places: 40**
- **Average length of stay: 15 months, but can stay up to 2 years**
- **Consortia: Launch Housing, BSL, Bendigo Kangan Institute**
- **Manager: Rebecca Lee, Manager, Launch Housing**



GLEN WAVERLEY, HOLMESGLEN

- Co-located at Holmesglen Tafe, Glen Waverly campus, South East Melbourne
- Number of places: 40
- Average length of stay: two years, early research showed that students stayed on average for 15 months.
- Consortia: Launch Housing, Brotherhood St Laurence & Holmesglen Tafe
- Manager: Bianca Joyce, Manager, Launch Housing

LOGAN FOYER



- **Located in Logan between City of Brisbane and the City of the Gold Coast 31% of population under 20**
- **Number of places: 22 with expansion plans to 40**
- **Average length of stay: Started in 2011, average stay is 10 months**
- **Consortia: Wesley Mission, Qld Dept of Housing and Public Works, Horizon Housing Company, WMQ is the RTO**
- **Manager: Jasmine Lind, Program Coordinator, Wesley Mission**



OUR PLACE, CANBERRA

- Centrally located in Braddon ACT close to public transport and the CBD
- Number of places: 25 young people, including parents with children aged 0-3
- Average length of stay: Average length of stay is 13 months
- Consortia: Barnardos /Anglicare /Rotary(participants in the Our Place program are engaged full-time with a variety of vocational/tertiary and Year 11/12 educational providers located across the ACT). Participants in the program are not restricted to attending at one specific provider, rather young people participate in the educational option that best suits their unique needs, aspirations and goals.
- Manager: Siobahn Cosgrave, Manager, Barnados Youth Homelessness Services

NEW FOYERS

- Chippendale
- Gold Coast
- Townsville



Other Foyers ?





FOYER FOUNDATION'S PARTNERSHIP WITH THE BROTHERHOOD OF ST LAURENCE

- Designed to enhance the complementary roles we play in the foyer movement in Australia
- Agreement includes appointment of our first Executive Officer
- To be based at BSL offices with BSL providing administrative support



FOYER FOUNDATION'S PARTNERSHIP WITH THE BROTHERHOOD OF ST LAURENCE

- Working capital secured for two years
- A service membership offering being launched today
- The importance of philanthropic support in making the vision happen

FOYER FOUNDATION STRATEGY

ALSO IN THE NEXT TWO
YEARS

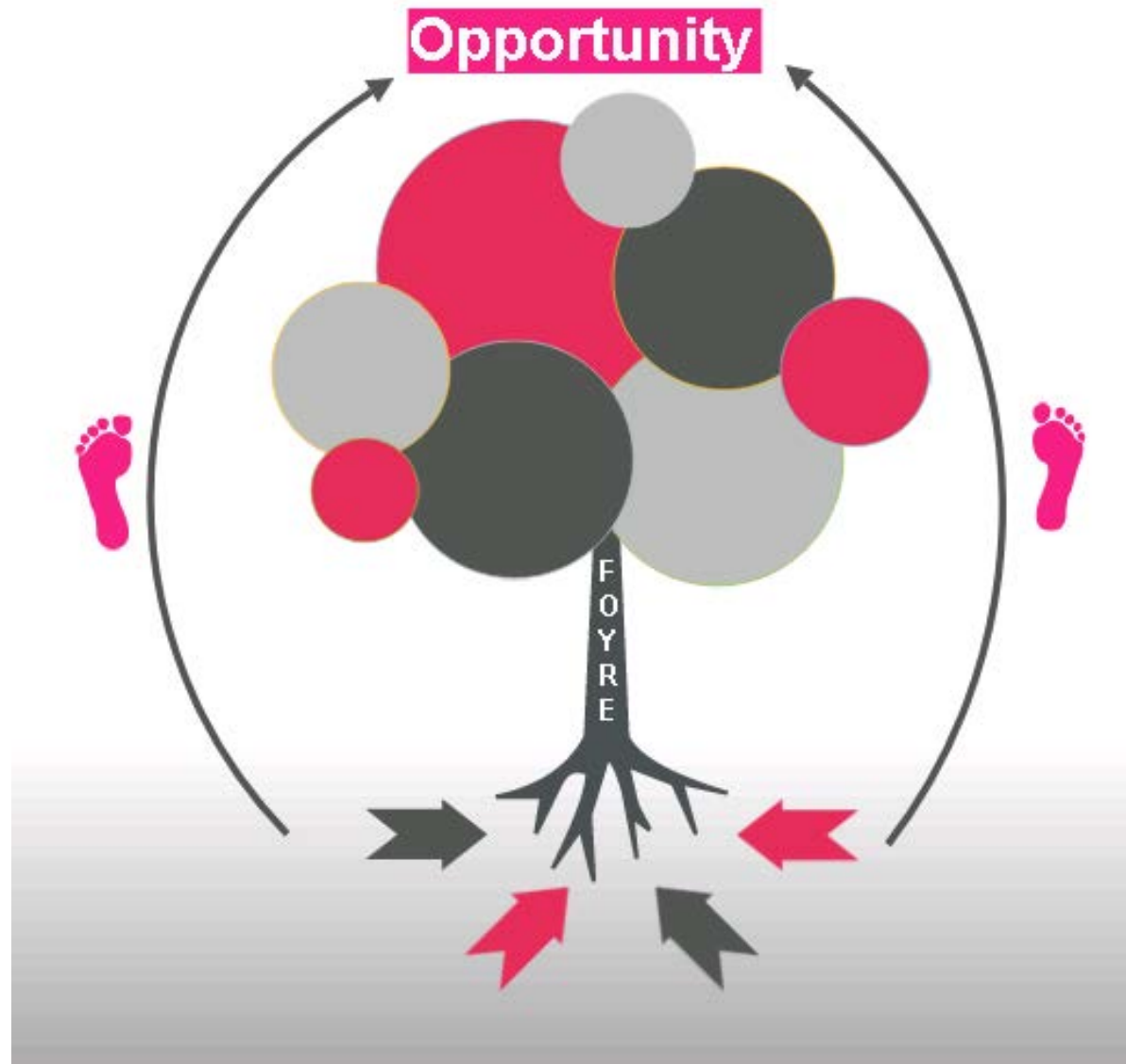
- **Building a community of practice**
- **Building an effective accreditation process**
- **Building our advocacy strategy**
- **Holding an annual national Conference**



A VISION FOR THE FOYER FOUNDATION

- We do accreditation and oversee communities of practice
- We bring resources to bear to advocate for new Foyers
- We leverage the influence of Foyers for the young people who live in their surrounding community
- Our (particular) vision is 30 accredited Foyers operating in Australia by 2030

COMMUNITY ENGAGEMENT



SPONSORS

